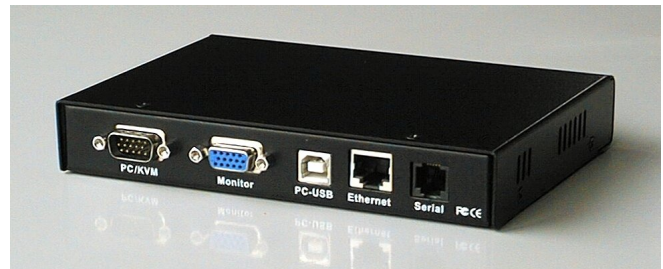


PROKLE

Secure Remote Control of Computers or KVM Switches Over IP



PROKLE is a powerful and secure IP extender to address the critical issue of remote server management. When associated to PROKLE, any conventional KVM switch turns into a high performance IP model with remote access to computers by a simple mouse click. PROKLE can be used as well to take control of single server or workstation. You can work or carry out maintenance operations from any location in the world over the Internet or from any office of your company over your LAN. PROKLE does not need any specific cabling; it uses the existing network infrastructure.

- Total control over remote servers or workstations from BIOS to OS level
- Simultaneous access from multiple users, no user limitation
- Specially designed to provide the IP connectivity to any conventional KVM switch already installed
- Can drive any PS/2 or USB KVM switch
- Can replace any KVM switch complex hot-key sequence with a simple mouse click
- Fast mouse response time
- High video quality with automatic adjustment up to 1600 x 1200 or 1680 x 1050
- Remote power on/off support when attached to ioPower or any power control switch with serial attachment
- High compression permitting to work with bandwidth connections as low as 33 Kbps
- Ultra-security using full 1024-bit PKI authentication / 256-bit SSL encryption with ephemeral keys
- High user management that can get user information from a local database or from remote LDAP / RADIUS / Active Directory servers
- Monitoring of servers with generation of emails or SNMP alarms in case of problem
- Ethernet 10/100 IP connection
- Redundant Internet access via a simple modem and any telephone line
- PPP server for out of band secure access
- Win-32 viewer and Java viewer for cross-platform compatibility
- Very small form factor

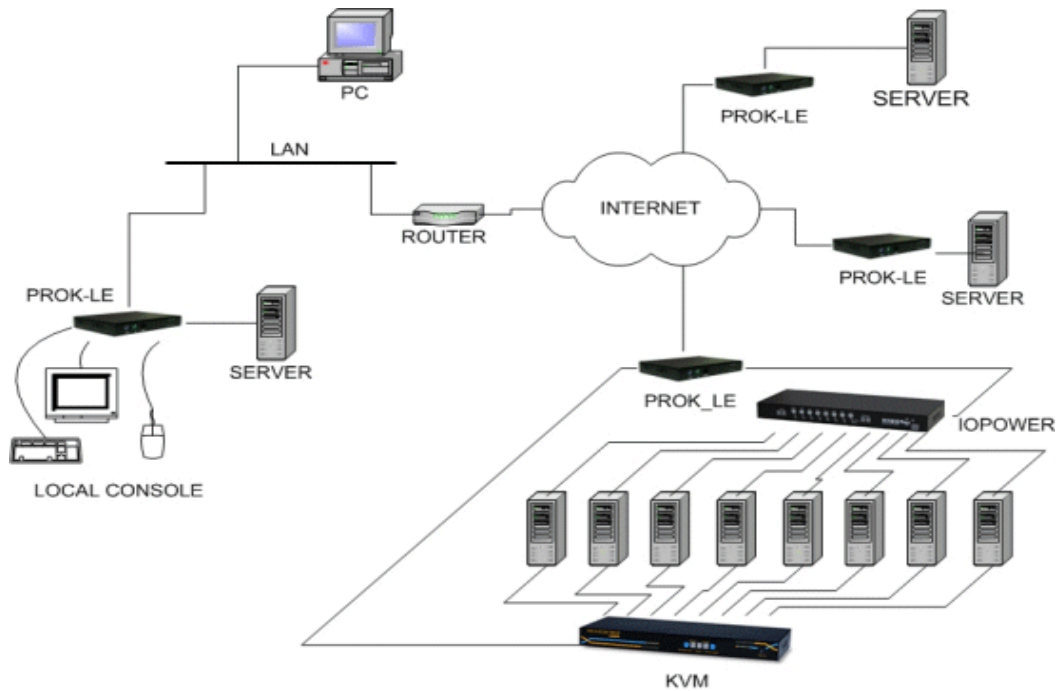
Overview

Viewers: The access to remote computers is done from your PC using an ordinary web-browser and thin win32 or Java viewer software. All you need is to login the PROKLE and download the viewer program.

Network Connections: Normally, PROKLE is connected to an Ethernet LAN accessing the Internet via a router. However, PROKLE provides a PPP server or client connection through its high-speed RS232 port. When set up as server, it can accept direct connections over a simple dial-in modem phone line, providing a backup system to access your servers while your network is down. When set up as a client, it permits a redundant connection to the Internet via a modem.

Local Console: you can connect a keyboard, mouse, and monitor to PROKLE. These devices provide the same service as if they were connected directly to the server or to the KVM. The local user sees the same screen as remote users, but the mouse is faster because there is no transmission delay.

KVM Control: By using a conventional KVM, you can increase the number of managed servers. PROKLE can support any KVM switch of any brand mark. When using this configuration, only one server can be controlled at a time. However, the servers can be selected by a simple mouse click because PROKLE can **generate all KVM hot keys automatically**.



PROKLE can be connected directly to a server or behind a conventional KVM switch

Power Control: PROKLE can drive most of power supply units that are controlled through a local RS232 connection. The power-supply-unit login and control messages are configurable. Using a power supply unit makes it possible to remotely power off and power on the servers individually.

Monitoring and Alarms: PROKLE can survey the servers automatically and detect several symptoms revealing a malfunctioning machine. When a faulty server has been identified, and depending on the detected default, PROKLE can generate an **alarm email** describing the problem to several destinations. It can also send an **SNMP trap** to an SNMP manager.

Security: PROKLE distinguishes itself among its peer products not only in its stability in durable performance, but also in its industry-standard security features such as full 1024-bit PKI Authentication and 256-bit SSL data encryption. You can choose from among three security levels in combination with three types of password policies and three categories of user privileges. When the full PKI is in service,

Connection Encrypted: High-grade Encryption (AES-256 256 bit)

The page you are viewing was encrypted before being transmitted over the Internet.

Encryption makes it very difficult for unauthorised people to view information travelling between computers. It is therefore very unlikely that anyone read this page as it travelled across the network.



you must provide a set of certificates permitting a bidirectional authentication of the remote user by PROKLE and PROKLE by the remote user. These certificates can be managed internally in your company or bought from an official CA such as Verisign for example. The Prosum technical support can help you to manage and generate your certificates.

User Authentication: PROKLE can get the user ID/Password and privilege by reading a locally managed database or by requests to **LDAP / RADIUS / Active Directory** servers if your company has already set up a centralized management of users.

Delivery Warranty and Technical Support: PROKLE is delivered with all its accessories (power adapter and cables). It comes with a 3-year warranty and free technical support.

Technical Specifications

• Processor:	ARM Intel IXP425 at 533 MHZ
• Memory:	SDRAM: 32 MB ; FLASH: 16MB
• VGA Capture	Hardware, special ASIC
• Server/KVM Port Connectors:	HDB 15-pin Male + special cable assembly providing VGA, PS/2 mouse and keyboard connectors; USB type B
• Local Console Connectors:	PS/2 Keyboard 6-pin Mini Din female; PS/2 Mouse 6 pin Mini Din female; VGA HDB 15-pin Female
• Ethernet Interface:	RJ-45 connector, 10/100 BASE-T connection with auto-sensing
• Serial Console Port (front):	RJ-12 connector / 115200 bps max - Used only for console management
• Serial Control Port (back) :	RJ-12 / 1Mbps high-speed serial for connection to external modem or power control device
• Video Resolution :	1600 × 1200 @ 60HZ max
• Viewers	Win32 viewer / JAVA viewer
• Management:	With any browser connected to the embedded web server via HTTPS secure connection
• Security:	SSL, Encryption with 256-bit ephemeral keys User/server authentication based on password and PKI certificates
• Keyboard and Mouse Emulation:	PS/2 and USB
• Remote Power ON/OFF:	By use of an optional power unit connected to the serial port
• Power supply	External DC 12V 2A
• Operation Temperature:	0 to 50°C
• Storage Temperature:	-20 to 60°C
• Humidity:	0 to 90%, non-condensing
• Housing:	Metal
• Dimension(L x W x H):	16 x 11.5 x 2.5 cm
• Weight:	600 g
• Safety / EMI Certification:	FCC, CE